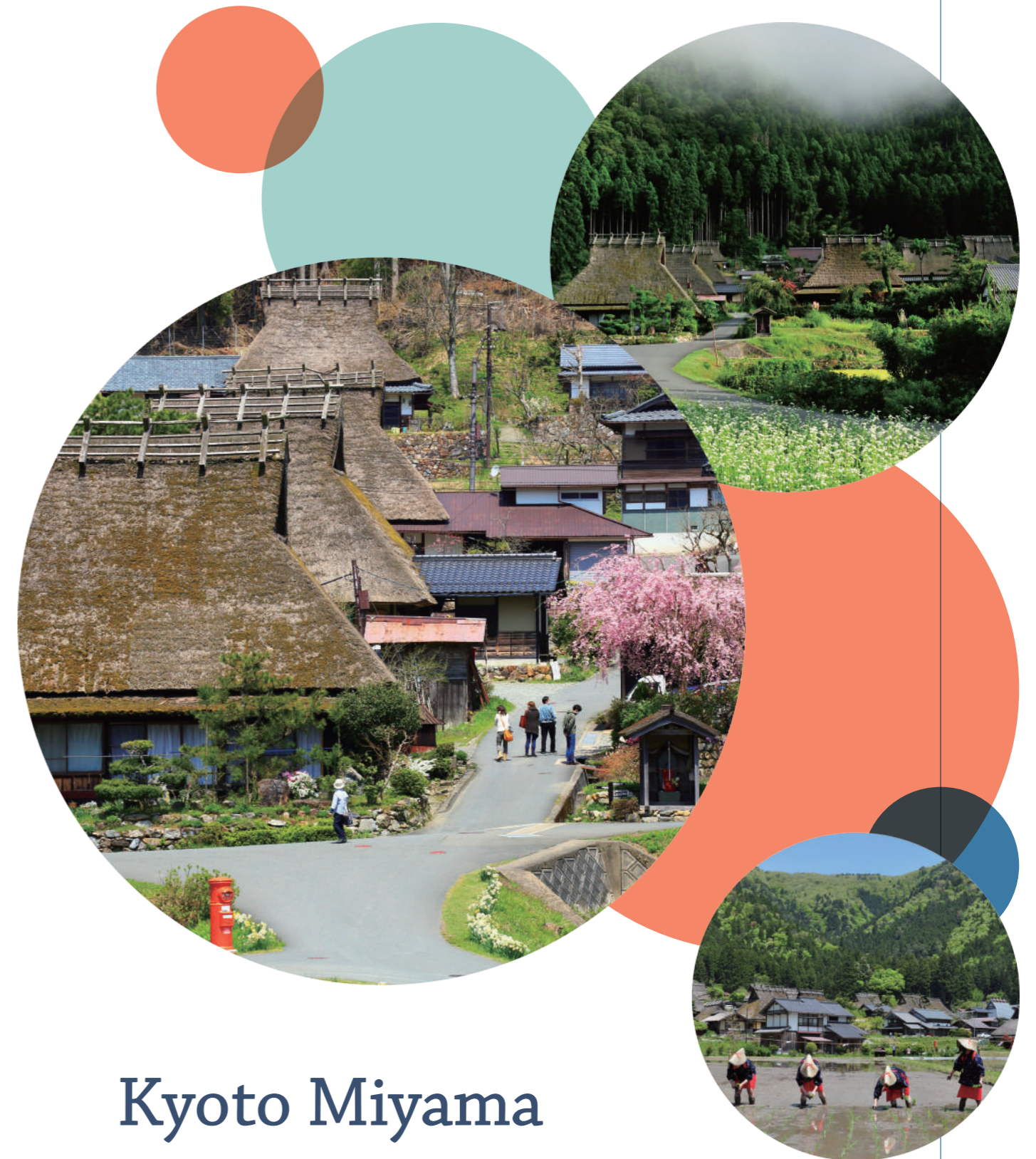




WEB: [miyamanavi.com/en/](https://miyamanavi.com/en/)



@kyotomiyama



# Kyoto Miyama Educational Homestay

Kyoto Miyama Rural Educational Homestay with Local Experiences

# Introduction

Miyama Town is located in the center of Kyoto Prefecture, about 50 kilometers from Kyoto's city center with a population of approximately 3,700. The region stretches 32 kilometers from East to West and 18 kilometers from North to South. In Miyama, the authentic traditional landscape and lifestyle in a Japanese mountain village still remains. Also, visitors can enjoy snowy landscapes in January and February. The paths from Wakasa Bay on the Japan Sea coastline to the ancient capital of Kyoto are known as the mackerel road or "saba kaido" which run through the hills across the region surrounding the Miyama area. For many centuries, this saba kaido was one of the main links connecting the valleys of Miyama to the rest of Japan. Miyama was one of the major inn towns for travelers across the roads and the locals' hospitality to welcome visitors still continues today. Miyama Town and the surrounding region were designated as Kyoto Tamba Kogen Quasi-National Park in March 2016.

Located in the neighboring area of the ancient capital Kyoto, various historic traditions remain in the region, some of them with the history of nearly 400 yrs. Miyama is the most suitable destination for visitors who are keen to know Japanese culture in depth. Visitors can meet with local people and experience lifestyle of authentic rural old Japan.

The sponsor, Kyoto Miyama Tourism Association (the "Miyama DMO"), is organizing the framework of safety implementation of the rural-educational-homestays in Miyama with the cooperation of the Kyoto Prefectural Nantan Regional Development Bureau and Kyoto Nantan Health Center. As a licensed travel agency, Miyama DMO is now accepting rural-educational-homestays and arranging various activities for students from abroad to experience cultures and traditions in Miyama.

Participating students will stay overnight, immersing them in the life of local families in a rural mountain village in Japan. In this program, students are expected to support meal preparations using local ingredients. So far, we have accepted approximately 1,000 students from around the world including Taiwan, Australia and various other countries.

Currently, approximately 20 host families are available in Miyama for educational-homestay with the capacity of accepting a maximum of 60 students. Local families are looking forward to experience intercultural exchanges with young people from abroad. Many of them may not be fluent in English but all are having wonderful experiences with homestay students every time.

All staff of Miyama DMO are residents of Miyama Town and available for 24 hours support during your homestay. Miyama Town is looking forward to accepting students from abroad who are wishing to know Japanese cultures and traditions.



# About Miyama

geography, climates and sightseeing spots

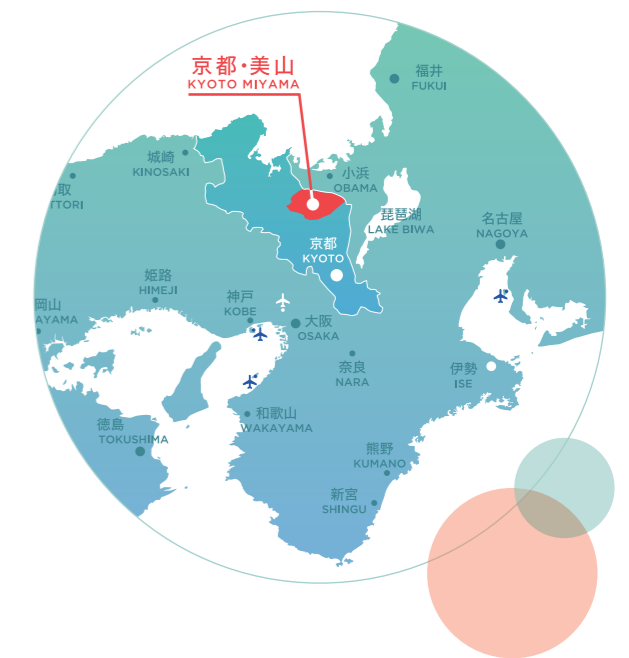
## Welcome to Miyama!

We hope you have exciting and great experiences in Miyama and take wonderful memories back to your country.

## Miyama's geography

Miyama Town is located in the center of Kyoto Prefecture. The size of the town is quite large. The total area of the town is 340.47 square kilometers and it takes 90 minutes by car from one end of town to the other.

The town is an extraordinary place, situated in the adjacent area to the big city of Kyoto where the exquisite rural old Japan landscape and culture surrounded by beautiful mountains still exist. In addition, Miyama lies between the Japan Sea of Fukui Prefecture and the ancient capital Kyoto City. Miyama has been the place of intercultural exchanges for many centuries.



## Miyama's climate

Japan has distinct four seasons and it is particularly obvious in Miyama. Visitors can experience different landscapes and cultures in all four seasons. In spring, cherry blossoms bloom in Miyama one week after Kyoto City. In May, rice planting in rice fields begin. In summer, local children swim in pristine water rivers surrounded by deep green trees. In autumn, the leaves of deciduous trees turn red, yellow and brown painting the mountains in beautiful colors. Japanese have developed their collection of traditional colors, known as dentouiro, consisting of 465 colors, whose names originate from flora and fauna which are still recognized in daily life of Japanese people. The snowfall starts from mid-December and the area is covered in snow from late January to February. In this season, Miyama's Thatched Village (kayabuki-no-sato) snow lantern festival is held every year. Thatched roof houses in the village are illuminated from late January until the end of February. The stunning beauty of monochrome landscapes will be a great memory for participating students.

# About Miyama

Sightseeing spots

## Miyama's Thatched Village

The Thatched Village is the most visited attraction in Miyama. Almost the whole village is composed of thatched houses and visitors can enjoy the atmosphere and the breathtaking views of these thatched roofs. The village was designated as a traditional buildings preservation district by the Japanese Government in 1993. In the village there are 39 thatched roof houses with 100 people residing in them.



## Miyama folklore museum

The folklore museum is in the village. You can see the inside of a thatched roof house and experience the lifestyle of rural old Japan, also learning about the structure of the thatched roof house by going up to the attic. Relax with Miyama's special local herb tea, served free in the museum. (Age 12 or below: no entrance fee)



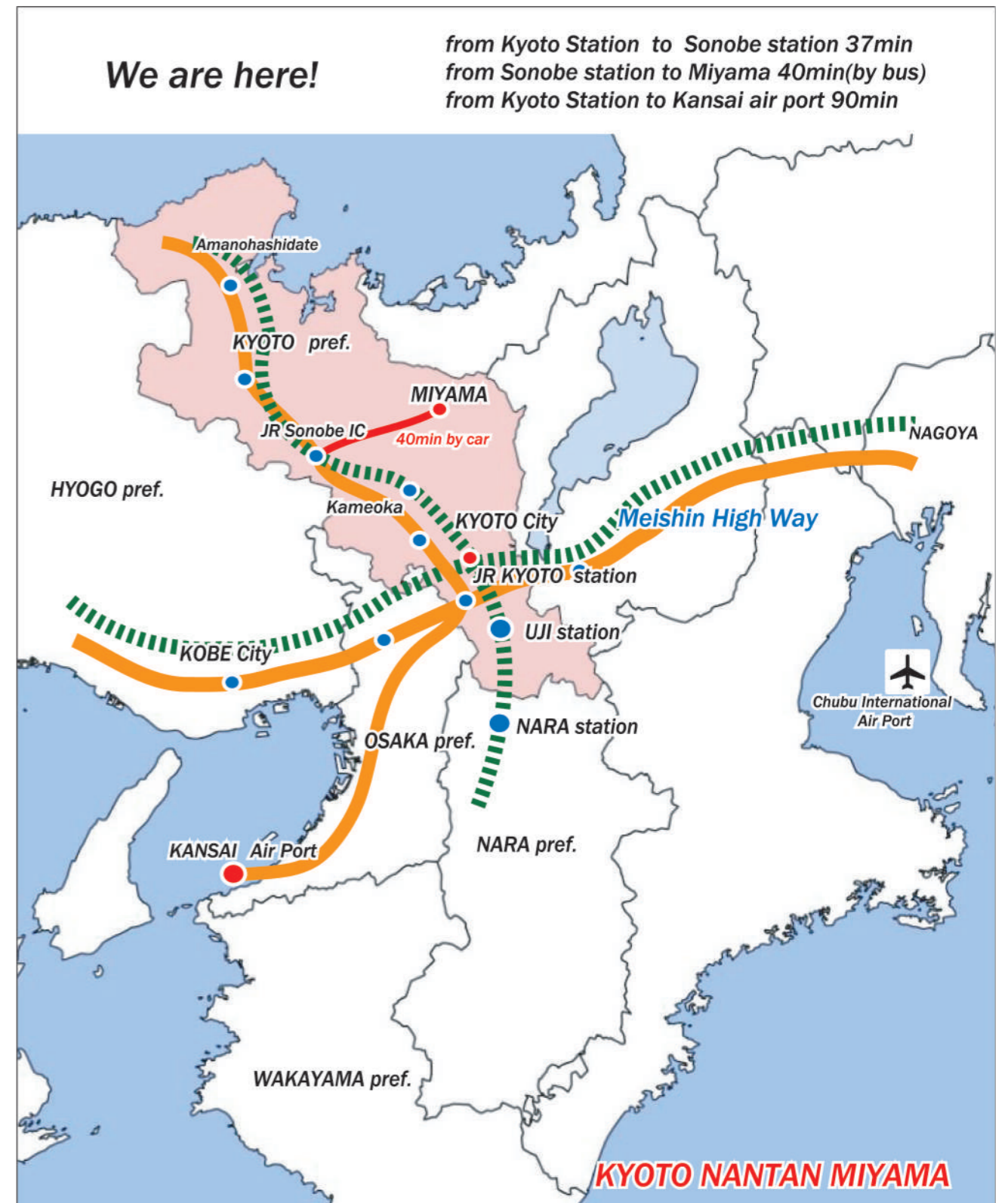
## Kyoto Tamba Kogen Quasi-National Park Visitor Center (the "Visitor Center")

The entire Miyama Town represents a large part of Kyoto Tamba Kogen Quasi-National Park. In the Visitor Center, you can get information about the Quasi-National Park. On the second floor of the visitor center, there is a big room which can be used for lectures, as a lunch room or for other events (prior booking required). Miyama's largest souvenir shop is next door.



# Access

Miyama Town is located at the center of Kyoto Prefecture, only 50 kilometers from Kyoto City (90 min. by car). You can experience an atmosphere of a rural mountain village in Japan without having to spend a lot of time getting there.



# Time schedule of homestay/ Emergency contact details

## Arrival Day

### Welcome Ceremony (approx. 20 min.)

Venue: Kyoto Tamba Kogen Quasi-National Park Visitor Center or Miyama's Thatched Village.

Students meet their host family. Welcome greetings from host families. Staff will give guidance and some tips for staying with a Japanese family in a Japanese house. It would be great to also have a greeting message from students.

### Move to host family's house (5 to 30 min.)

Travel by a private car of the host family.

### Activities

Each host family is planning/preparing various activities for students, such as cooking of local meals, harvesting vegetables, local lifestyle and/or culture experiences

## Next morning

### Farewell ceremony (15 min.)

Venue: Kyoto Tamba Kogen Quasi-National Park Visitor Center or Miyama's Thatched Village

Ceremony of farewell greetings with host family. Please give a word of appreciation to host families.



## Emergency Contact Details

If a student feels sick or is involved in an accident or some other serious incident, he/she must tell his/her host family. The host family will immediately contact our staff and the staff will take all necessary actions to ensure the safety and well-being of the student.

- 1 The host family immediately contacts Miyama DMO.
- 2 In case of a serious emergency incident (serious injury, etc.) Miyama DMO will immediately call the urgent care center, Emergency Department (119).
- 3 In addition, Miyama DMO will immediately notify the tour leader, relevant interpreter or the travel agency of the incident. They will also notify the Kyoto Prefectural Nantan Development Bureau (Public Office), Kyoto Nantan Health Center and all other related parties.
- 4 The travel agency and or tour leader will contact his/her parents or guardian.



# Educational Homestay Memories

## Welcome ceremony, farewell ceremony, arrival day



## During activities and cooking, please work together with your host family.



# Optional tours

(additional payment required)

In addition to educational-homestay, various optional activities are available in Miyama. All tours are offered in English, the price excludes tax.

## 1 Thatched Village Guided Walk

Local guide shares the story of the preservation of Miyama's thatched village and its local life.

Duration	30~60min
Price 1 group	JPY 11,000

\*1 group (up to 20pp)



## 2 Mochi pounding

Try one of our popular traditional activities with locals.

Duration	30min
Price 1 group	JPY 16,500



## 3 Cooking workshop

Cooking experience of Japanese traditional cuisine (e.g. rolled sushi, Japanese soup flavored rolled egg etc.)

Duration	120~150min
Price	JPY 3,300~/pp



## 4 Straw craft

Duration	60min
Price	JPY 3,300~/pp



# Sample Itinerary

## DAY 1

Arrive at Kansai International airport. Stay in NARA



## DAY 2

Todaiji temple, Nara park, Byodoin Temple.  
Stay in Kyoto



## DAY 3

Fushimi Inari shrine, Kiyomizu temple Lunch (central Kyoto) → Miyama  
15:00 Arrive in Miyama, Welcome Ceremony  
17:00 Teachers visit host families. Students experience local activities



## DAY 4

9:30 farewell ceremony  
9:30-10:30 thatched village guided walk  
Move to Osaka. Stay in Osaka



## DAY 5

Osaka



## DAY 6

Departure

# Host families

More than 20 families are waiting for your visit to Miyama. Almost half of them live in thatched houses or old farm houses. Each family offers a variety of activities (firefly watching, farm experience, cooking workshop etc.). Teachers can visit all the houses with local staff to ensure each student is settled into their host family (optional charge may apply).

## Nagaoka family

Enjoy beautiful landscape and a countryside experience. I love to cook with students from overseas. It would be a nice opportunity to exchange our culture during your stay.



## Omae family

I moved to Miyama from the City. Miyama is a wonderful place to enjoy authentic Japan and countryside life. Our family (2 sons, my husband and I) love to meet with students from overseas and talk in English.



## Takahashi family

Try your hand at various farm experiences in Miyama. My wife and I do farming near my house. Enjoy vegetable picking with us and taste local cuisine. My daughter and 2 cats are looking forward to meeting students from overseas.



## Kurauchi family

Our house is a typical traditional farm house built approximately 150 years ago; students can take part in a farming activity with us or stroll around the village. We hope the students enjoy activities experiencing our way of life and Miyama.



# School exchange

We have one Junior High School and one Elementary School in Miyama. One High School in the neighboring district is located in 20 min. by car from central Miyama. School exchange is one of the best ways to learn different cultures. Students can join classes and club activities in a local school. Kyoto Prefecture also helps to find schools for exchanges with schools in other regions within Kyoto Prefecture.

## The sample school schedule in Japan.



Note: Please make the application for a school exchange at least 3 months in advance. 6 months prior application is strongly recommended.

# Accommodation for teachers

## Miyama Nature & Culture Village KAJIKASO INN

**Convenient location** situated at the center of host families' houses.

**Main:** Japanese style room, shared bath room

Single room	JPY 14,300~/pp (1 night stay and 2 meals)
Twin room	JPY 13,200~/pp (1 night stay and 2 meals)

**Annex:** Western style room, private bath room, elevator is available

Single room	JPY 15,950~/pp (1 night stay and 2 meals)
Twin room	JPY 14,850~/pp (1 night stay and 2 meals)

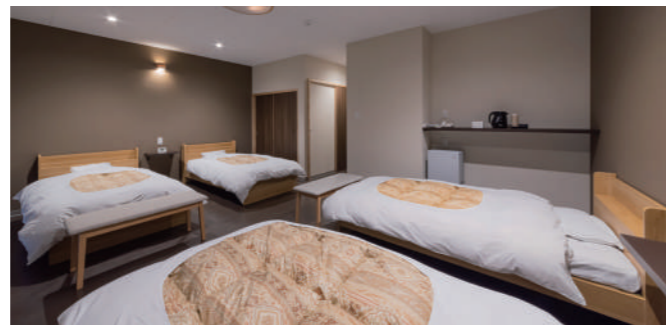
- Wi-Fi available
- Credit card available
- Restaurant and souvenir shop in the accommodation.
- Air-conditioned
- Reception staff speak English





# The process and documents to apply

## Inside view



## Meal



## Spa



### 1year - 6month ahead of your travel

#### Send an Inquiry to travel agencies.

The travel agency sends an inquiry to us to advise your travel date.

### 6month - 3month ahead of your travel

#### The school finalize the trip and the trip itinerary.

Share the following information with Kyoto Miyama Tourism Association. School name, number of students and teachers, arrival time to Miyama, departure time from Miyama, any additional activities.

### 90days ahead for your travel

#### Share the following information with us.

Name list of students, any special meal requests (including allergies), and an introduction sheet for each student.

### 60days

#### Kyoto Miyama Tourism Association holds a meeting with host families.

Here we explain about your school information, things to note, safety management etc.

